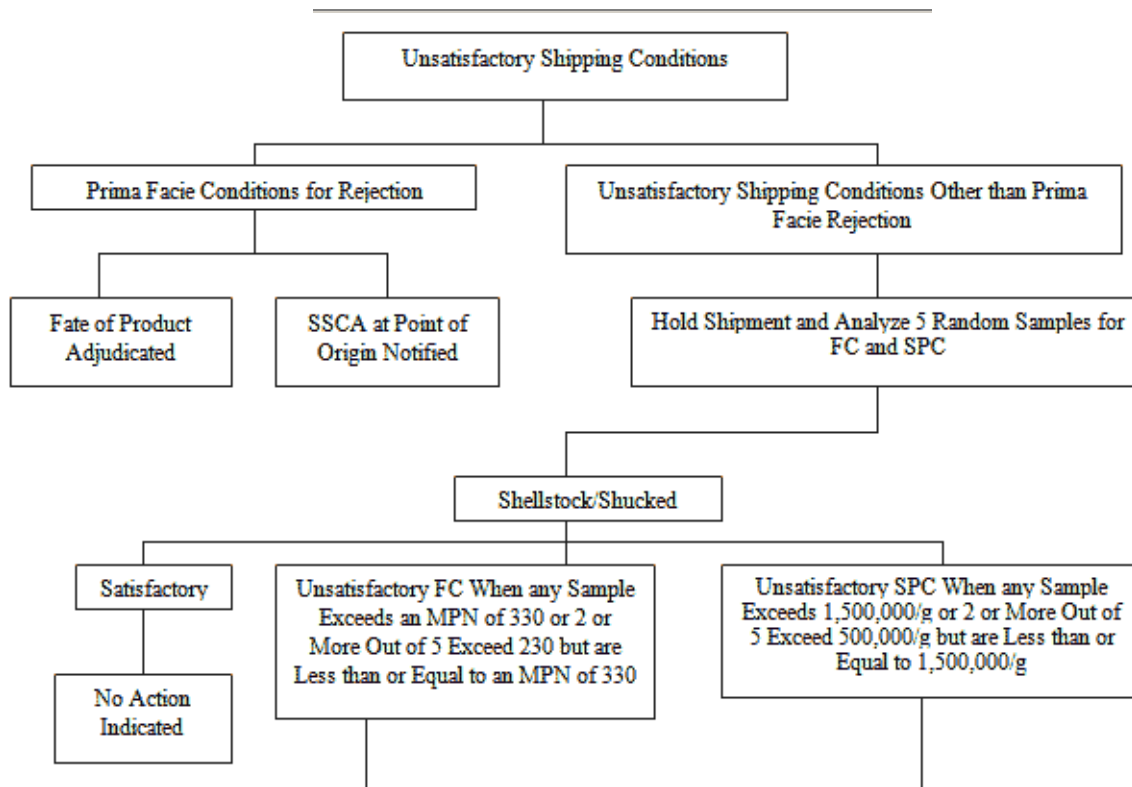


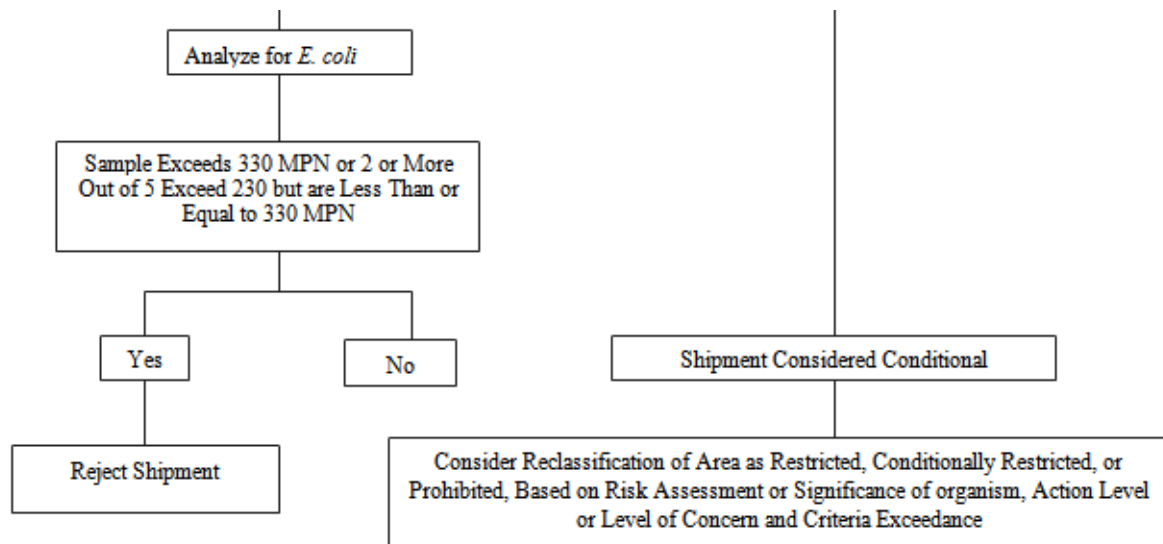
**National Shellfish Sanitation Program  
Guide for the Control of Molluscan Shellfish  
2007**

**Section IV. Guidance Documents  
Chapter II. Growing Areas**

Guide Contents

**.12 Bacteriological Examination of Shellfish Shipments  
Decision Tree**





Description: Flow chart showing the decision making process following bacteriological examination of shellstock and shucked shellfish shipments.

If the Authority determines there are unsatisfactory shipping conditions that are prima facie conditions for rejection, the fate of product is adjudicated and the State Shellfish Control Authority (SSCA) at the point of origin is notified.

If the Authority determines that unsatisfactory shipping conditions exist other than those for prima facie rejection, the Authority shall hold the shipment and analyze five random samples for fecal coliform and standard plate count.

If the sample results are satisfactory, no action is indicated.

For fecal coliform, sample results are unsatisfactory when any one sample exceeds an MPN of 330 fecal coliforms or when two or more out of five exceed an MPN of 230 but are less than or equal to an MPN of 330 fecal coliforms. If the samples are determined unsatisfactory for fecal coliform then they shall be analyzed for *E. coli*. For *E. coli*, sample results are unsatisfactory when any one sample exceeds an MPN of 330 or when two or more out of five exceed an MPN of 230 but are less than or equal to an MPN of 330. If the sample is unsatisfactory for *E. coli*, the shipment shall be rejected. If the *E. coli* results are satisfactory, the shipment is considered conditional and may be shipped. In such cases the Authority should consider reclassification of the area as restricted, conditionally restricted, or prohibited, based on a risk assessment or the significance of the organism, action level or level of concern and criteria exceedance.

For standard plate count, sample results are unsatisfactory when any one sample exceeds 1,500,000/g or when two or more out of five exceed 500,000/g but are less than or equal to 1,500,000/g. Shipments having unsatisfactory plate counts shall be considered conditional and may be shipped. In such cases the Authority should consider reclassification of the area as restricted, conditionally restricted, or prohibited, based on a risk assessment or significance of the organism, action level or level of concern and criteria exceedance.