



State of New Jersey

DEPARTMENT OF ENVIRONMENTAL PROTECTION

P.O. BOX 402
401 EAST STATE STREET
TRENTON, NJ 08625-0402

CHRIS CHRISTIE
Governor

KIM GUADAGNO
Lt. Governor

BOB MARTIN
Commissioner

ADMINISTRATIVE ORDER NO. 2013-03

Pursuant to statutory authority granted to the Department of Environmental Protection at N.J.S.A. 58:24-2, and to ensure that the public health is not at risk from the consumption of shellfish that may have been subjected to pollution or other condition that may render the shellfish dangerous to health, by Administrative Order 2012-10a signed by me on October 26, 2012, effective immediately after sunrise on October 29, 2012, the Department closed all waters of the State to shellfish harvest because of potentially degraded water quality resulting from Hurricane Sandy.

The Department has determined, through monitoring of water quality and analysis of shellfish tissue, that the coastal waters of the Barnegat Bay described below are now safe for the harvesting of shellfish in accordance with the Shellfish Growing Water Classification rules at N.J.A.C. 7:12.

Accordingly, the Department hereby reopens the following waters and returns them to their prior classification:

All of the New Jersey State waters within Barnegat Bay south of a line crossing the bay starting at the end of Tuscarora Ave (74°11'29.69"W / 39°46'01.68"N) to a point at Barnegat Inlet (lighthouse) (74°06'16.51"W / 39°45'52.60"N) to a line crossing the bay starting at the southern point of the mouth of Thompsons Creek (74°18'40.42"W / 39°35'46.02"N) to a point on Long Beach Island at the end of 5th St in Beach Haven (74°14'29.70"W / 39°34'04.70"N). See the attached map.

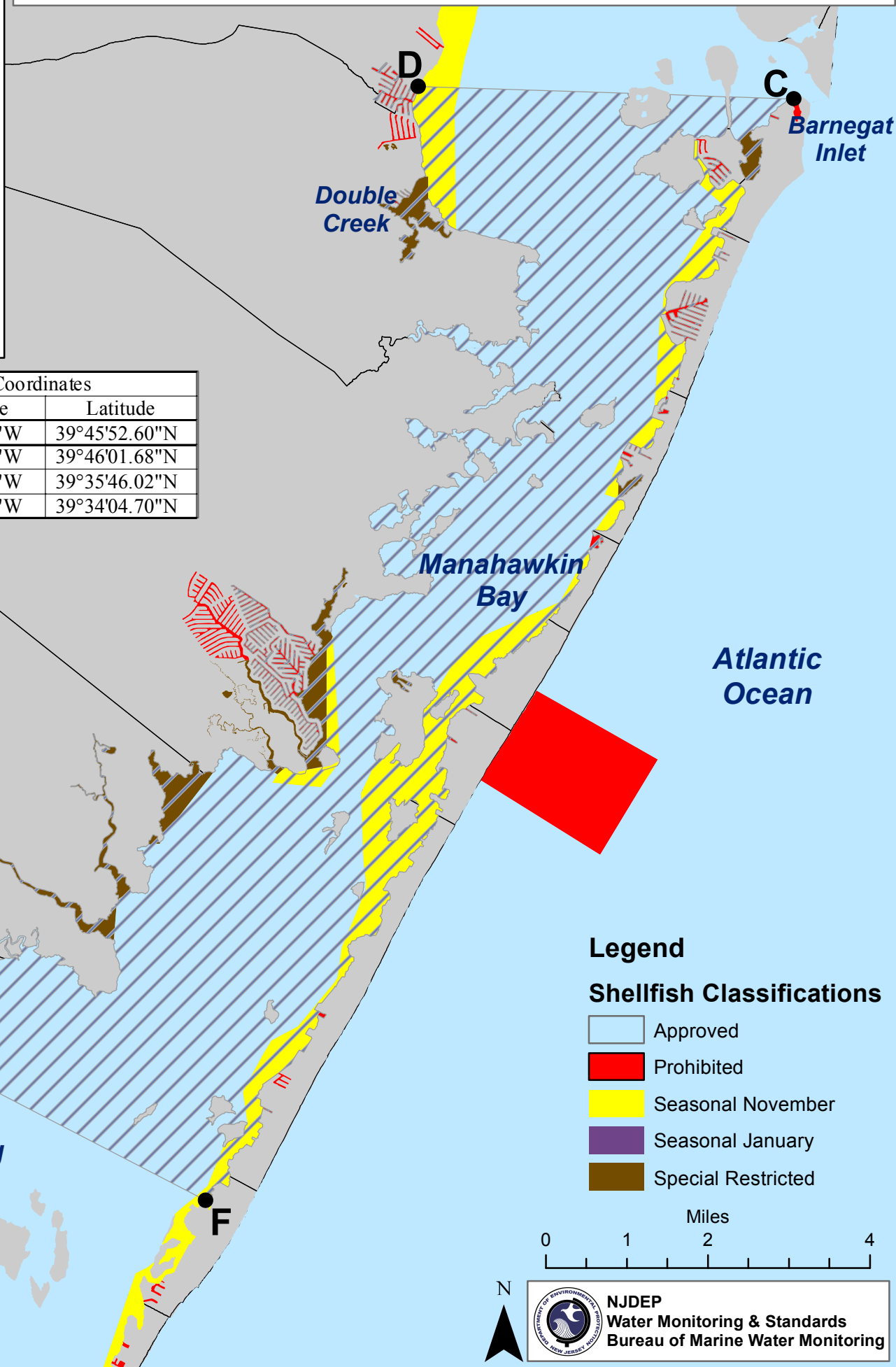
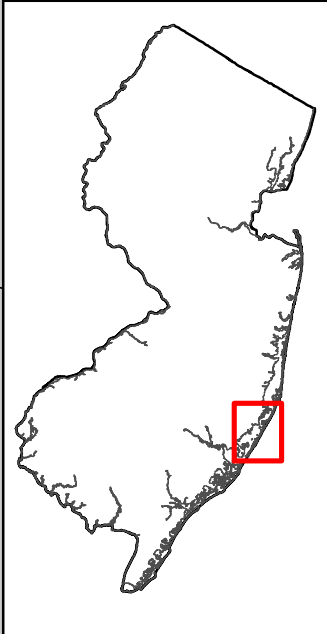
Portions of Administrative Order Number 2012-10a signed by me on October 26, 2012, and all previous Administrative Orders or portions thereof that are inconsistent with this Order, are hereby superseded and repealed.

This Order shall take effect at sunrise (6:46 AM.) on March 29, 2013.

Dated: March 28, 2013

Bob Martin
Commissioner

Gray Hatch Represents Those Areas Being Reopened to Their Prior Classification (Effective 3/29/13)

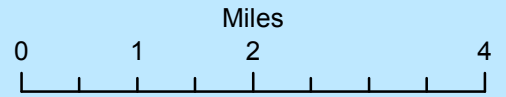


Point	Coordinates	
	Longitude	Latitude
C	74°06'16.51"W	39°45'52.60"N
D	74°11'29.69"W	39°46'01.68"N
E	74°18'40.42"W	39°35'46.02"N
F	74°14'29.70"W	39°34'04.70"N

Legend

Shellfish Classifications

- Approved
- Prohibited
- Seasonal November
- Seasonal January
- Special Restricted



N

NJDEP
Water Monitoring & Standards
Bureau of Marine Water Monitoring