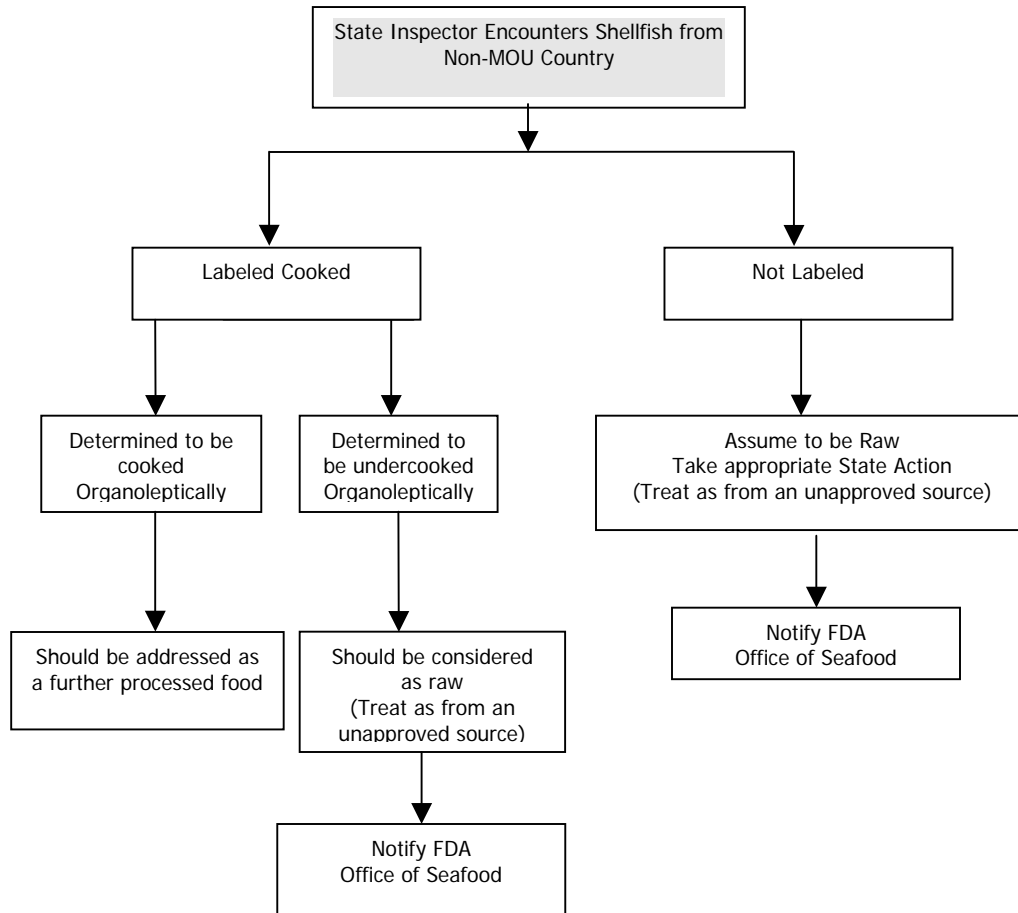


Proposal Subject	Guidance for Receiving Shellfish from Non-MOU Countries
Specific NSSP Guide Reference	Guidance Documents Chapter II
Text of Proposal/ Requested Action	Place decision tree for receiving shellfish from non-MOU countries into the NSSP Guidance Documents for further guidance to shellfish control authorities.

DECISION TREE – SHELLFISH FROM NON-MOU COUNTRIES

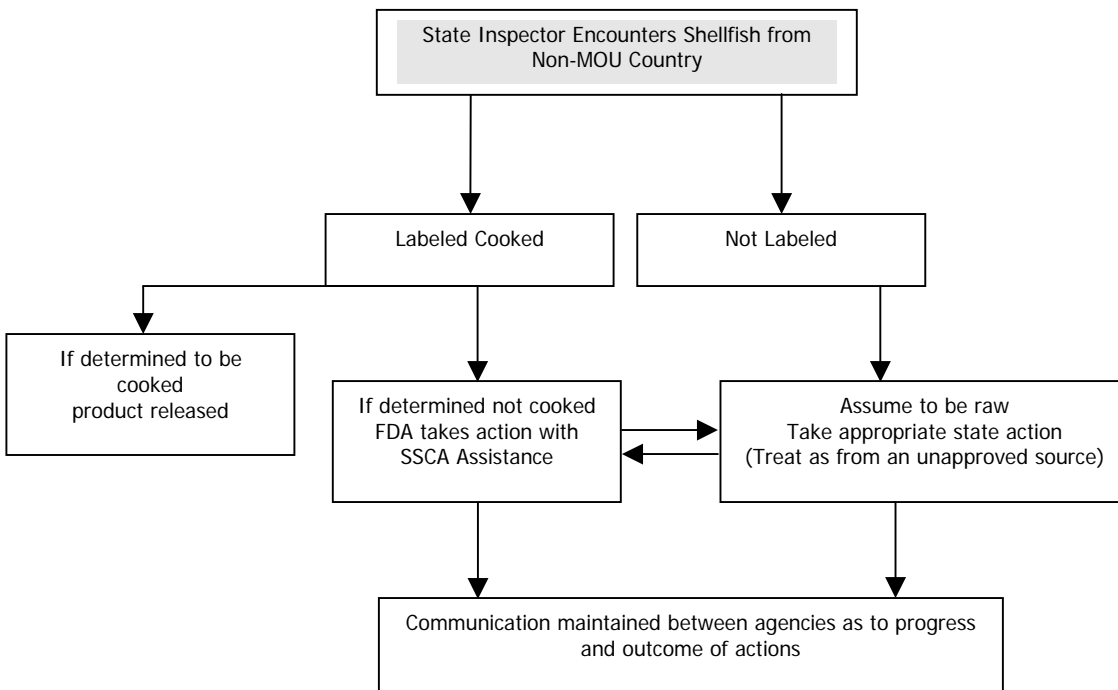


Public Health Significance: None Submitted

Cost Information (if available): None Submitted

Action by 2003 Import Assessment Committee
 Recommended the decision tree for non-MOU shellfish, as amended, be used as a guidance tool. Additionally, the Committee recommended that the Executive Board direct the Executive Director to write a letter to the USFDA requesting that all FDA regional offices be directed to uniformly notify their SSCA's upon entry of any non-MOU raw shellfish products into the U. S. and that a committee be charged to discuss how said notification can be implemented and how the FDA will maintain communication with the SSCA until such time as an action relative to non-MOU product is resolved.

DECISION TREE – SHELLFISH FROM NON-MOU COUNTRIES



Action by 2003 Task Force II Recommended adoption of Proposal 03-211 as amended by the Import Assessment Committee.

Action by 2003 General Assembly Adopted recommendation of 2003 Task Force II.

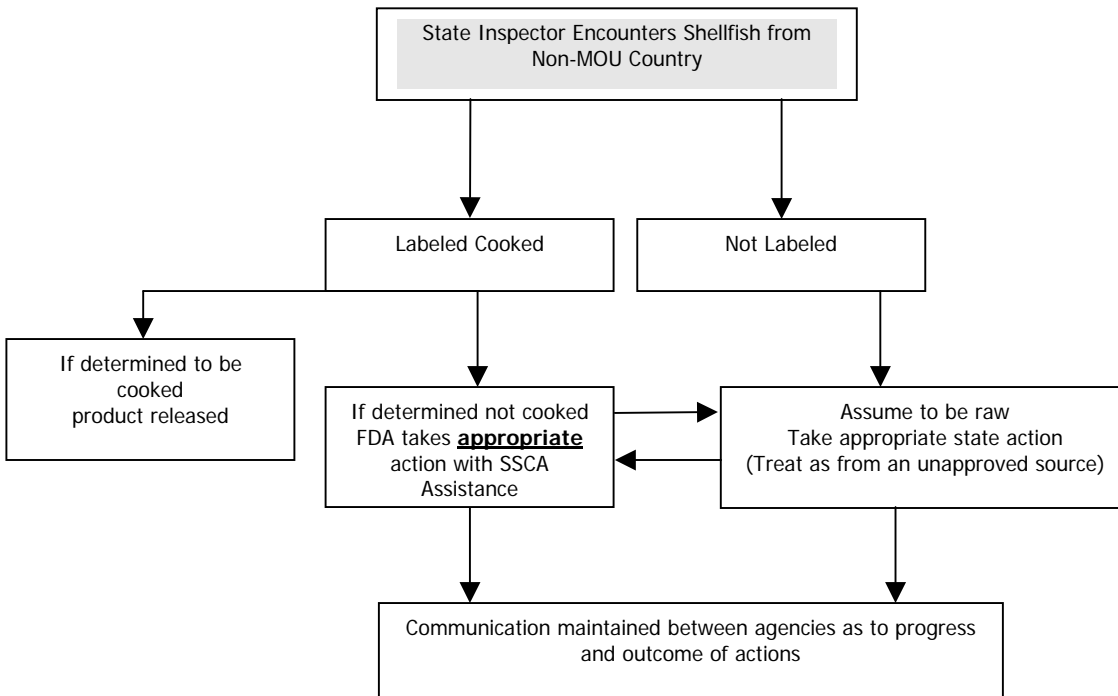
Action by USFDA Concurred with Conference action.

Action by 2005 Import Assessment Committee Recommended adoption of Proposal 03-211 as amended.

Amend the Decision Tree and propose a new effort to improve communication between the FDA and SSCAs relative to sharing information.

- 1) Under "Labeled Cook", in the box addressing "not cooked" product, the box should read "If determined not cooked FDA takes appropriate action with SSCA assistance."
- 2) Relative to FDA and SSCA communication, the Committee approved the following motion: "The ISSC requests the FDA provide a list of principal contacts of the FDA District Import Office relating to the importation of non-MOU molluscan shellfish to the ISSC for posting of the ISSC's web site. Furthermore, the state shall provide the FDA Import District Office with a corresponding list of the State Shellfish Control Authority contacts."

DECISION TREE – SHELLFISH FROM NON-MOU COUNTRIES



Action by 2005 Task Force II	Recommended adoption of Import Assessment Committee recommendation on Proposal 03-210.
Action by 2005 General Assembly	Adopted recommendation of 2005 Task Force II.
Action by USFDA	Concurred with Conference action.