

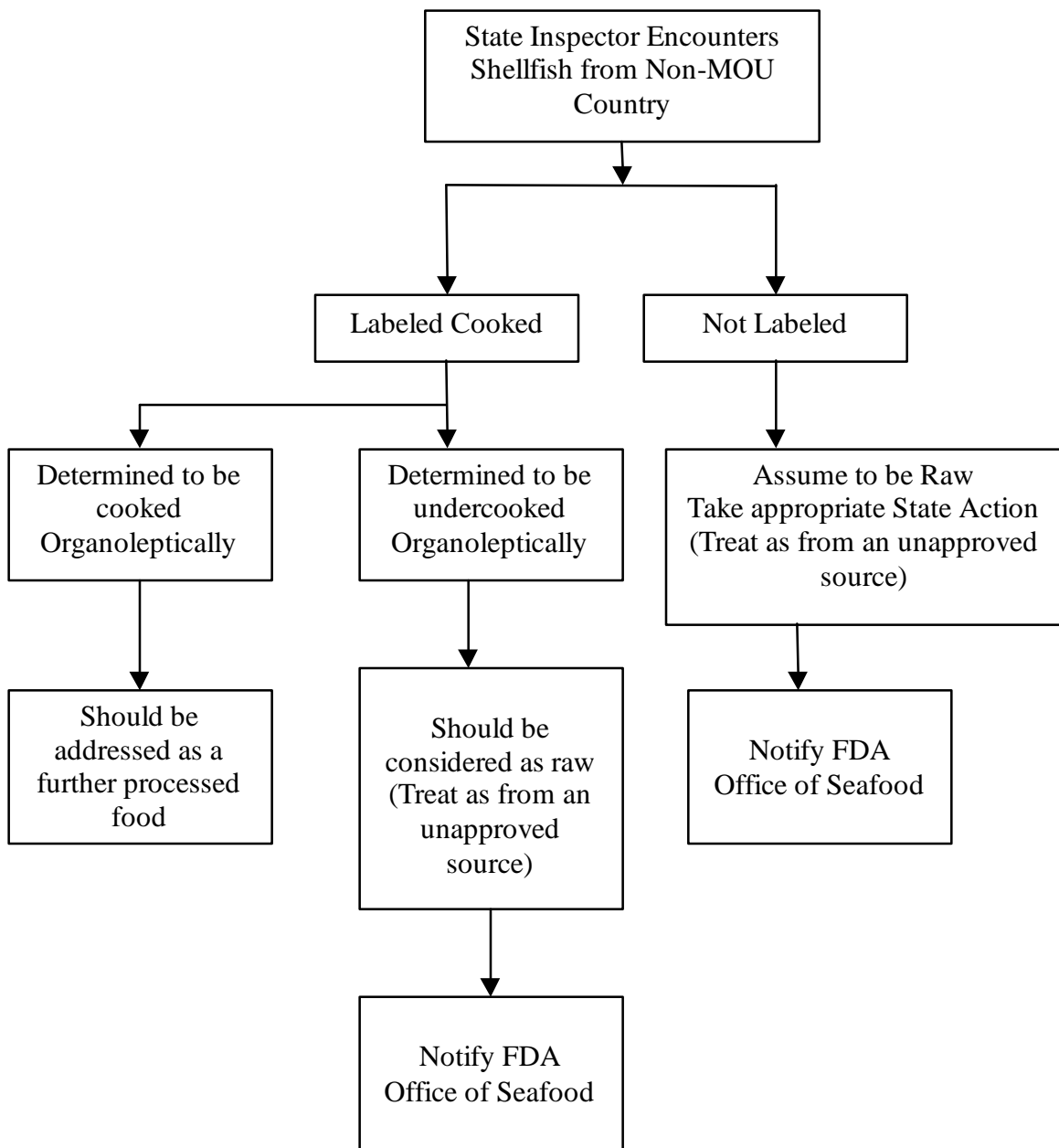
INTERIM DEFINITIONS

The Executive Board of the ISSC adopted two recommendations from the Import Assessment Committee to address shellfish imports. These changes will be submitted as proposals for discussion at the 2003 ISSC Biennial Meeting, August 2-8.

- ☐ Fresh Shellfish - Means any species of oysters, clams or mussels whether
 - (1) Shucked or in the shell,
 - (2) Whole or in part, and
 - (3) Scallops in any form except when the final product form is the abductor muscle only that are raw or have been subjected to thermal treatment, which achieved an internal product temperature of less than 145° F for 15 seconds.

- ☐ Modified (interim) the present definition of Shellfish to:
Shellfish means all species of:
 - (a) Oysters, clams or mussels, whether
 - (i) Shucked or in the shell;
 - (ii) Fresh or fresh frozen; and
 - (iii) Whole or in part.
 - (b) Scallops in any form except when the final product form is the abductor muscle only.

The attached flowchart serves as additional guidance.



DRAFT